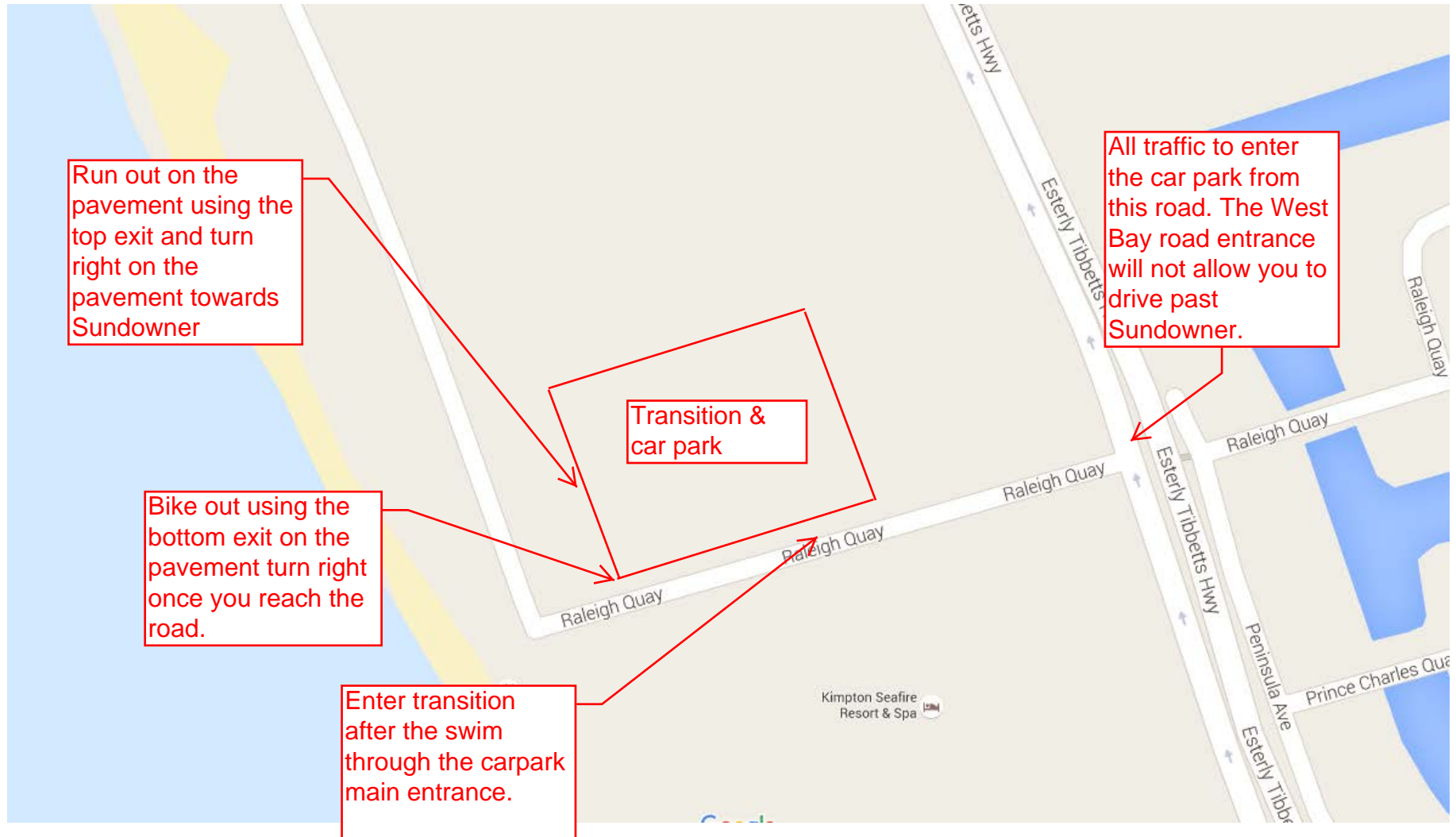


Transition

Sprint
Super Sprint
Junior Sprint



Transition
Kids Triathlon



Kids triathlon transition area (in front of Tiki Beach)
Bike out to the left
Run out to the right

Car park

All traffic to enter the car park from this road. The West Bay road entrance will not allow you to drive past Sundowner.

Run Course
Sprint
Super Sprint
Junior Sprint

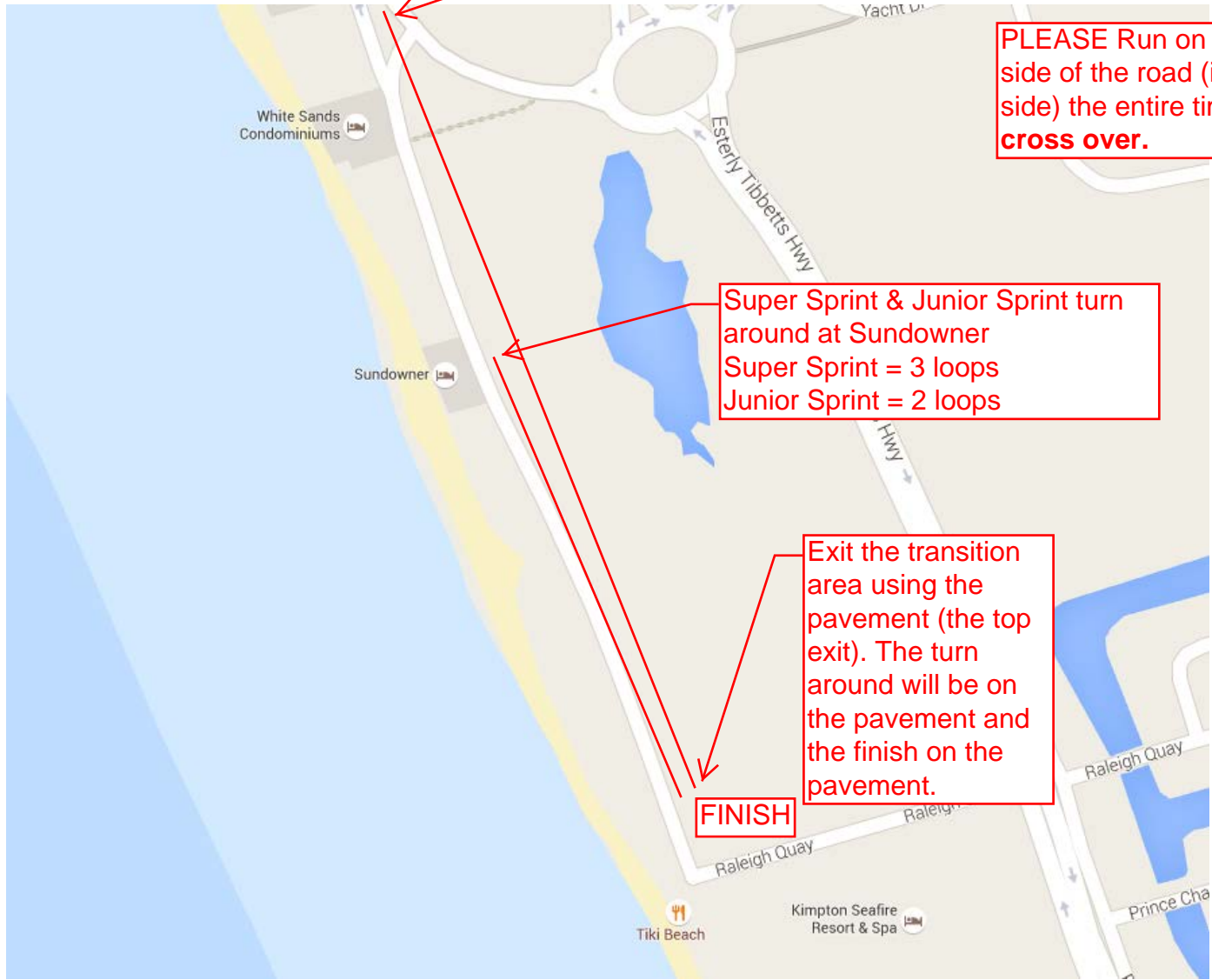
Sprint turn around at top of the road = 3 loops

PLEASE Run on the right hand side of the road (i.e. not the ocean side) the entire time. **Do NOT cross over.**

Super Sprint & Junior Sprint turn around at Sundowner
Super Sprint = 3 loops
Junior Sprint = 2 loops

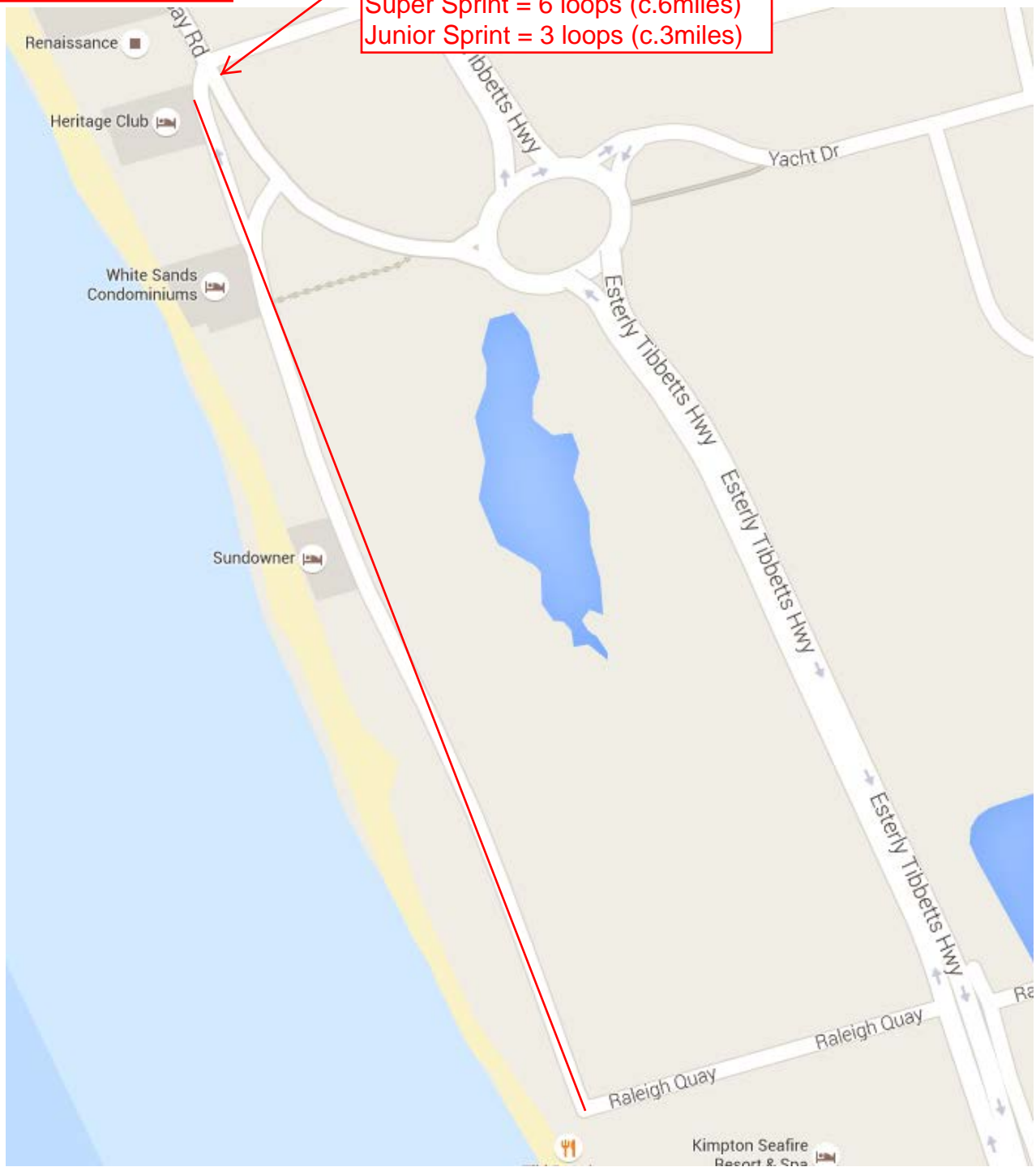
Exit the transition area using the pavement (the top exit). The turn around will be on the pavement and the finish on the pavement.

FINISH



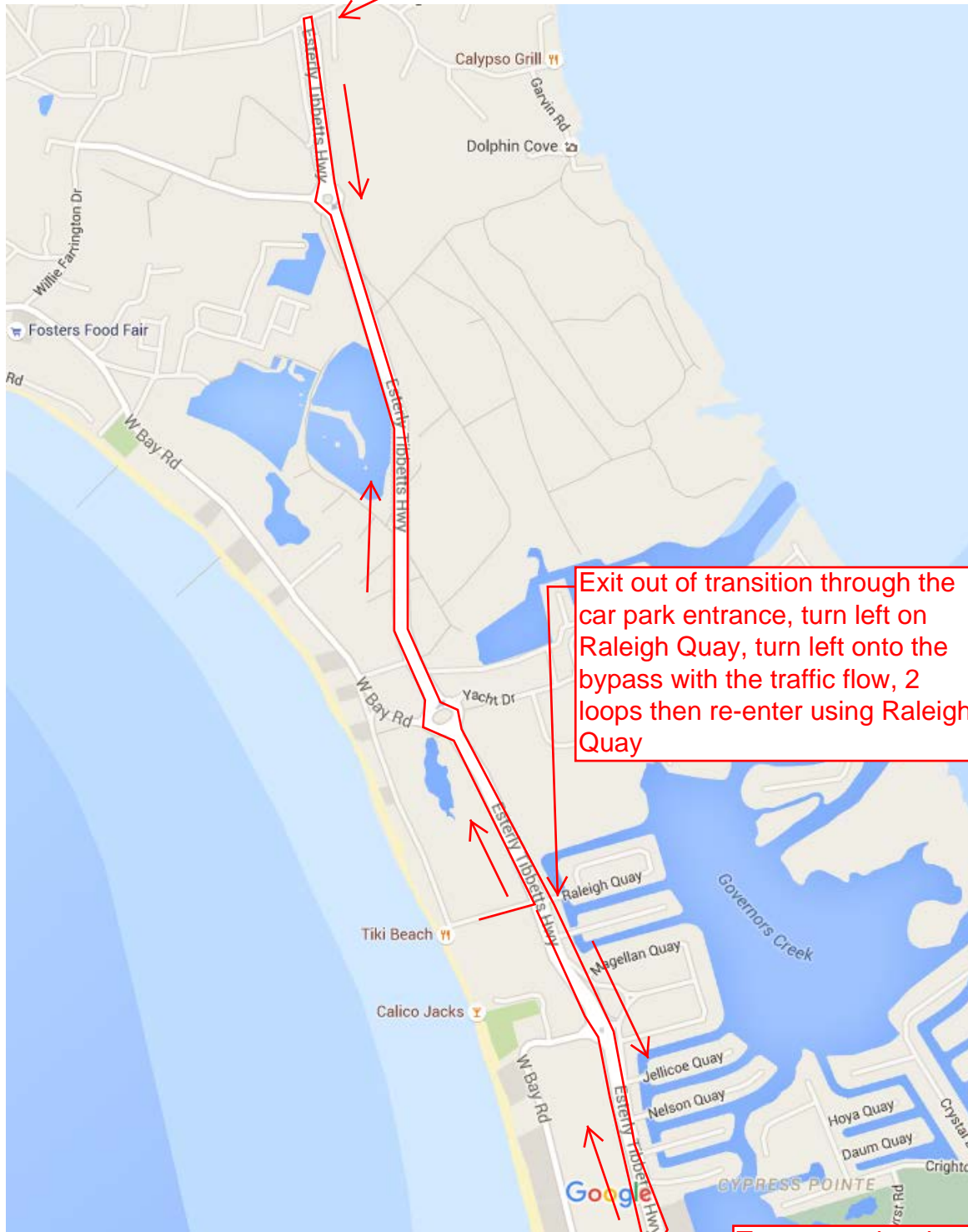
Bike Course
Super Sprint
Junior Sprint

Turn around at top of the road
Super Sprint = 6 loops (c.6miles)
Junior Sprint = 3 loops (c.3miles)



Bike Course - Sprint

Turn around at the top of the bypass



Turn around at the Cost-U-Less Roundabout